

## Our Program

LBDN offers a full-day year round program for children six weeks to six years of age. Low teacher to child ratios assure that all children enjoy individual attention.

Our curriculum is based on developmentally appropriate practices allowing each child to proceed as he or she is ready. This fosters confidence and self esteem. We also practice an emergent curriculum, meaning subject matter can emerge from the child's own interests, encouraging communication.

All meals are prepared on our premises and follow USDA nutritional guidelines. Each child participates with a small task in serving the meal to promote self sufficiency.

Our children come from diverse ethnic, cultural, economic and social backgrounds. Financial aid is available to qualified families.

## Our Mission

Our mission—to provide quality early care and education for young children of working parents—has remained unchanged for nearly a century.

## Long Beach Day Nursery Locations

### West Branch and Administrative Offices

1548 Chestnut Avenue  
Long Beach, CA 90813  
Phone: 562.591.0509  
Fax: 562.599.8262

### East Branch

3965 Bellflower Blvd.  
Long Beach, CA 90808  
Phone: 562.421.1488  
Fax: 562.429.0492

To learn more, visit us at  
[www.lbdn.org](http://www.lbdn.org)  
or email us at: [info@lbdn.org](mailto:info@lbdn.org)



Long Beach Day Nursery is a not-for-profit  
501 (c) (3) organization.

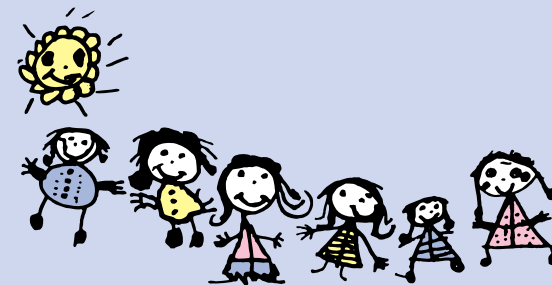
A partner agency of United Way

# Long Beach Day Nursery

Serving Children and Families Since 1912



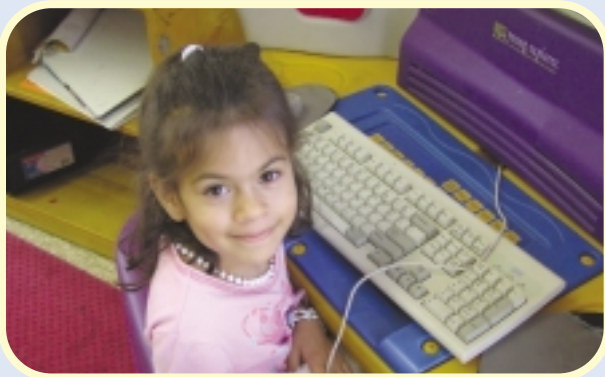
*"When I drop off my daughter in the morning, I don't have a worry in the world because I know she is having fun; she is learning and growing."  
— Liisa Penrose, mother*



[www.lbdn.org](http://www.lbdn.org)

## Our Background

Founded in 1912, Long Beach Day Nursery was one of the first licensed child care programs in California. Long Beach Day Nursery meets the high standards of accreditation by the National Association for the Education of Young Children, and is the oldest continuously licensed private social welfare agency in the state.



## A Program of Excellence

- **Nationally recognized:**  
Accredited by the National Association for the Education of Young Children
- **Low teacher to child ratios:**  
Infants 1:3; Toddlers 1:4; Preschoolers 1:8
- **Highly qualified teachers:**  
with ongoing training and development. Teachers are culturally sensitive and many are bilingual
- **Primary caregivers and continuity of care:**  
for infants and toddlers
- **Pre-kindergarten preparedness:**  
“Ready to Read” early literacy program, art, science, math and computers
- **Early intervention program:**  
provided by consulting child psychologist
- **Nutrition program:**  
balanced breakfast, lunch, and healthy snacks
- **Parent participation:**  
parent workshops, advisory committees and parent-teacher meetings
- **Parent and child events:**  
field trips, open houses, family picnics, and special events

*Long Beach Day Nursery provides parents with the peace of mind that their children are cared for in a loving and nurturing environment.*

## Our Philosophy

The Long Beach Day Nursery is dedicated to promoting personal growth and development for each child. It's a happy and caring place that parents can trust.

Young children develop rapidly. In fact, more development occurs during the first five years than at any other stage of life. A balance of physical, social, emotional, and intellectual stimulation is essential for this development. In our program, we enrich this process:

### **Physically–**

by providing a well balanced diet and an outstanding playground to promote coordination and creative play.

### **Socially and Emotionally–**

by listening, getting along with other children, taking care of hurts, encouraging independence, as well as providing structure and consequences.

### **Intellectually–**

by talking and encouraging communication, exposing children to new ideas, and generally preparing them for future life experiences.



Accredited by the  
National Association  
for the Education of  
Young Children

